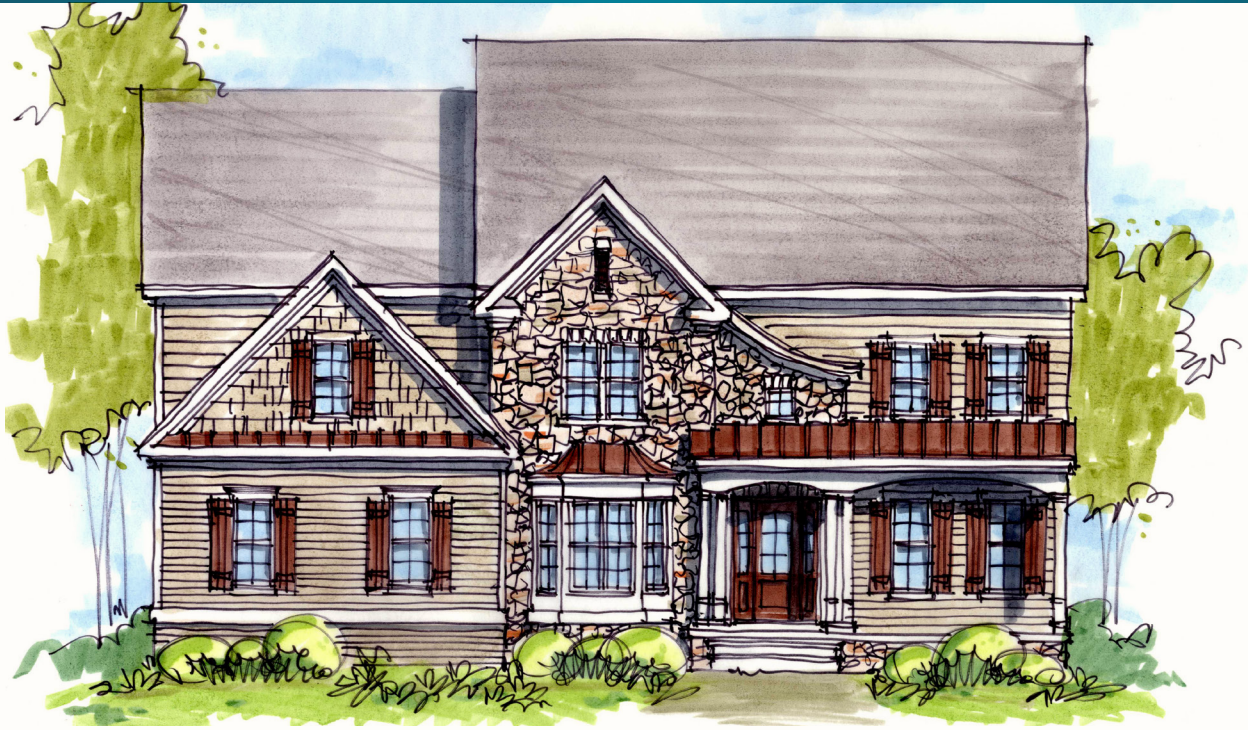


# BEL ARBOR

BUILDERS, INC.

*Extraordinary Custom Homes*



EUROPEAN ELEVATION (OPTIONAL)

## THE Kingley

### HOME SPECIFICATIONS:

4 Bedrooms | 3.5 Bathrooms

Total Square Footage: 3,682 sq. ft.

First Floor: 1,764 | Second Floor: 1,918

First Floor with FF Owner's Suite Option: 1,805

Second Floor with Family Room Option: 1,678

Garage: 595



ARTS & CRAFTS ELEVATION (OPTIONAL)



FARMHOUSE ELEVATION (INCLUDED)

804.NEW.HOME | sales@theyeatmangroup.com | www.theyeatmangroup.com



For more information about Bel Arbor Builders visit us at [www.BelArborBuilders.com](http://www.BelArborBuilders.com)

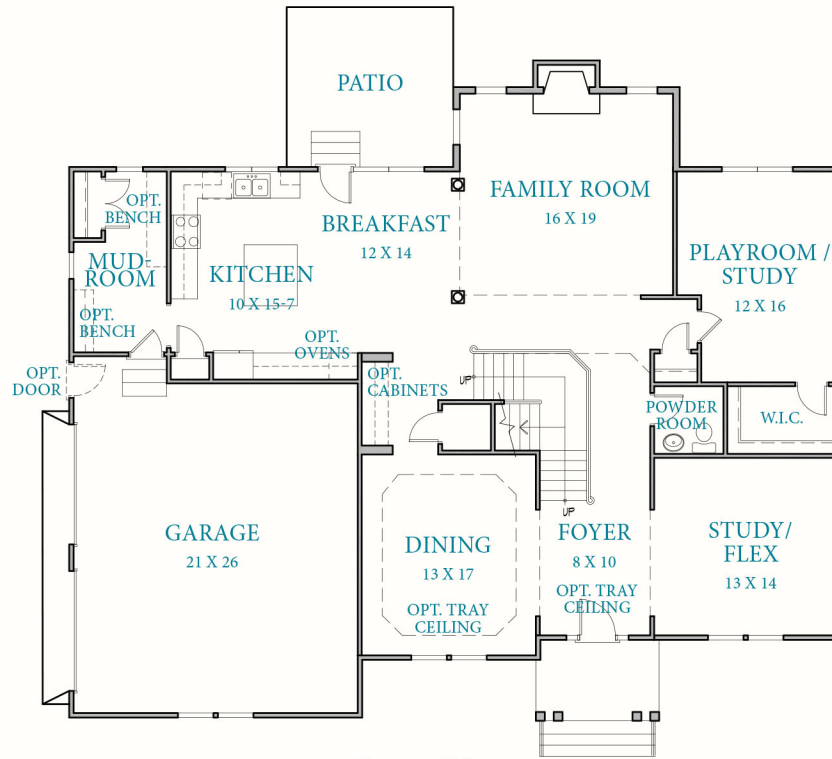
©2017 Bel Arbor Builders



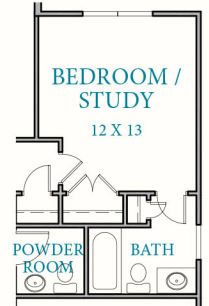
Renderings are for illustrative purposes only and subject to change without notice.



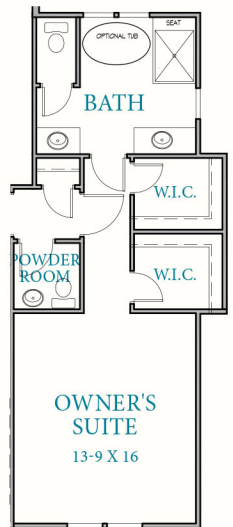
## THE KINGLEY LAYOUT:



### OPTIONAL FIRST FLOOR BEDROOM & BATH



### OPTIONAL FIRST FLOOR OWNER'S SUITE WITH BATH



### OPTIONAL UPPER FAMILY ROOM

